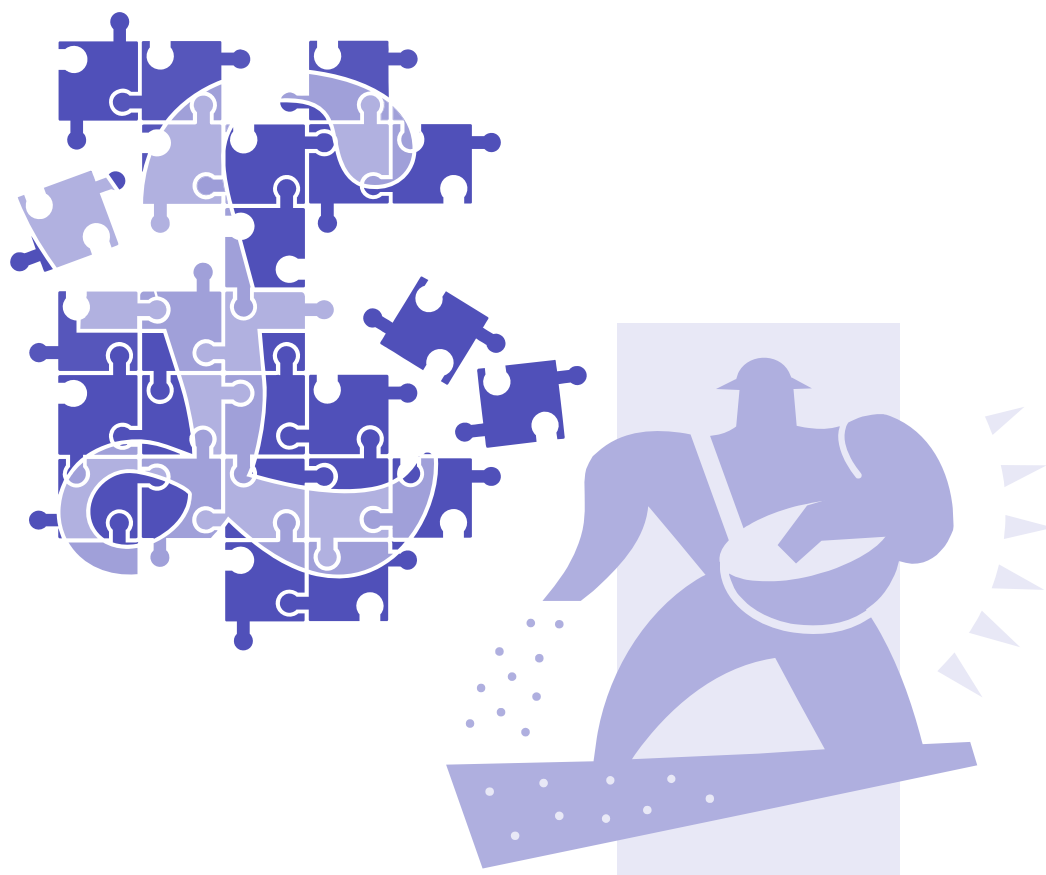


# Wessex Synod of the United Reformed Church



## Raising funds for mission a Guide for Churches

From  
Mission and Outreach Committee

November 2009



## **An amazing contribution!**

Churches throughout the United Kingdom offer an amazing contribution to their local communities by making their premises available to those around them. For some churches this can be a means of increasing their income, but where projects are set up that involve staff and high running costs it can become a challenge to local congregations and can result in loss of sleep to those with the responsibility of fundraising.

We are proud of the work done by our churches in communities the length and breadth of our Synod and have been greatly encouraged by the new initiatives undertaken as a result of "Going for Gold". However, now that "Going for Gold" money is coming to an end, we are conscious that many churches are anxious about future funding for their projects.

We wish we could offer more money from the Synod, but that is not possible; however we acknowledge the need for us to offer what help and support we can to enable our churches to find funding from other sources. This short booklet is the first stage and we hope it may help those who have limited experience of fundraising to seek funding from a wider base. A data version of this document is available and you will be able to follow the links to the various sources.

Yours in fellowship

Eddie Boon  
Convener Mission and Outreach Committee

## **Fundraising is tough**

Fundraising is not easy, but if you have a worthwhile project and you have the commitment and enthusiasm to persevere there is a good chance you will be successful.

The important thing is to do your research before you apply. Discover which charities support your kind of project in your community and then take time making a polished application.

There is no point in sending out hundreds of photocopied letters to every charity you can find. If they do not have a formal application form, send a letter addressed by name to the Secretary or Clerk. Ideally keep an initial request to one side of A4 stating clearly what you want and why. If you already have some funding state the church has raised £X,000 and other charities have offered you £Y,000. You need to be aware of current terminology to use when preparing applications.

## **Your Local Church.**

Generally you will need to show that you have raised a significant amount of money from within the church. If you are unwilling to fund the project you can hardly expect others to support you.

## **Your Local Community**

For small amounts of support it is often worthwhile approaching local businesses. For example a local supermarket may be willing to supply the snacks for the children at your family centre. Others may be willing to give cash. For example Waitrose is currently selecting local charities for a month at a time and inviting its customers to share in choosing how much support each will get from the company.

Often there are local charities covering your area. Some will be well known while others may have a low profile and be administered by a local solicitor. Often your local Council for Voluntary Service will be able to point you in the right direction.

All the counties covered by the Synod have **Community Foundations**. Most administer funds left by individuals that are only available to your county. They can often offer a few thousand to a qualifying charity. Currently some are administering "**Grassroots Grants**" The money is part of the £130 million nationwide drive by the Government to support thousands of groups and projects across the country, working to improve and revitalize their local communities.

When it comes to seeking money from further afield it is often best to use either **Funderfinder** or other similar software or use **the Directory of Social Change website (DSC)**. These are not cheap to buy into, but are often available free of charge at your local library or Council for Voluntary Service. Both will help you narrow down the charities which are most likely to support you. They will give basic details like the person to contact and may direct you to the charities' own websites. Should you decide it is worthwhile to subscribe to the DSC website you can opt to receive regular updates of fresh information regarding the charities on their database.

Charities will generally deal with you by post/email, but if there is an application for a large amount they may require a telephone interview or even want to visit your project. It may sometimes be helpful to telephone the key person to ask their advice re your application.

Two examples of charities that have been supportive of our churches are Children in Need who allocate around £10m twice a year. Often an application can be for two or three years. The other is Lloyds TSB who are willing to fund salary costs in some instances.

### Local Authorities

In the past, local authorities have given significant amounts to local charities but most are now having to cut back. If you are already receiving Local Authority funding it is vital that you make Council officers and local Councillors aware of how vital that funding is and that how the work you do actually saves them money so that you are not part of their budget cut. Although there is little fresh money available there are sometimes some small social cohesion grants available, or towards the end of a financial year a particular department may have some spare cash and be willing to give one off support.

**Often it is about keeping eyes and ears open and being in the right place at the right time.**

### Landfill Community Fund

This is money from the landfill companies for putting something back into the community. Each company has slightly different rules. Most require you to be within ten miles of one of their landfill sites, although Veolia is only five. Generally they are not willing to pay for work for the worshipping congregation, but will consider work in church halls where there is a high level of community activity. Their grants generally range from £5 to £50,000.

Information on the four main companies can be found at [www.veoliatrust.org](http://www.veoliatrust.org); [www.biffaward.org](http://www.biffaward.org); [www.sitatrust.org.uk](http://www.sitatrust.org.uk); [www.onyxenvtrust.org.uk](http://www.onyxenvtrust.org.uk).

### The Lottery

The lottery potentially offers significant amounts of money to those churches willing to apply. However as with many charities they will not fund projects where there is the intention to evangelise. Awards for All offer grants between £300 and £10,000. The Big Lottery offers more to significant projects that benefit the community.

### Regional Action and Involvement South East

RAISE exists *"to champion the third sector's unique contribution to making South East England socially, economically and environmentally sustainable"*. It is free to become a member and they send out regular e-mails and briefings by post, which sometimes gives information about funding sources.

### Synod

While Synod funds are limited it is still possible to apply for a grant for fresh mission based projects. An application form is available from Synod Office or via the website <http://www.urcwessex.org.uk> and applications need to be submitted via the financial secretary. Other Synod staff members are available to give advice as below.

Financial Secretary	David Page	c/o Synod Office
Development and Support Officer	Peter Hurter (North)	<a href="mailto:dso-n@urcwessex.org.uk">dso-n@urcwessex.org.uk</a>
Development and Support Officer	(South - Vacant)	<a href="mailto:dso-s@urcwessex.org.uk">dso-s@urcwessex.org.uk</a>
Children and Youth Development Officers,	Phil Ray (North)	<a href="mailto:cydo-n@urcwessex.org.uk">cydo-n@urcwessex.org.uk</a> ;
	Ruth White (South)	<a href="mailto:cydo-s@urcwessex.org.uk">cydo-s@urcwessex.org.uk</a> ;
Property Officers	Nicola Werro (North)	<a href="mailto:po-n@urcwessex.org.uk">po-n@urcwessex.org.uk</a> ;
	Peter Richardson (South)	<a href="mailto:po-s@urcwessex.org.uk">po-s@urcwessex.org.uk</a> .
Trust Officer	Stuart Maclean	<a href="mailto:trust@urcwessex.org.uk">trust@urcwessex.org.uk</a> ,

### Charities which favour the URC

Congregational & General Insurance Company Charitable Trust [www.congregationalinsurance.com/charitable\\_trust.php](http://www.congregationalinsurance.com/charitable_trust.php).

### Charitable Status

It is sometimes advantageous to turn your project into a charity. This may open up new funding opportunities as charities will often only fund registered charities. However this is not a step to take without advice and it may still be possible to attract the funding by getting your local Council for Voluntary Service or another friendly charity to accept the money on your behalf.

We hope this document will be of help and we wish you well with your fundraising. The Committee would welcome your comments on the usefulness of this document and also details of any other sources of funding that you discover.

## Other Useful contacts

### Community Foundations.

Berkshire Community Foundation  
<http://www.berkshirecommunityfoundation.org.uk/>  
Buckinghamshire Community Foundation  
<http://www.thebucksfoundation.org.uk/>  
Community Foundation for Bournemouth Dorset and Poole  
[www.localgiving4dorset.org.uk/](http://www.localgiving4dorset.org.uk/)  
Hampshire and Isle of Wight Community Foundation  
<http://www.hantscf.org.uk/>  
Oxfordshire Community Foundation  
<http://www.oxfordshire.org/>  
Surrey Community Foundation  
<http://www.surreycommunityfoundation.org.uk/>  
Wiltshire and Swindon Community Foundation  
<http://www.moneyshop.co.uk/charity/wiltshire.htm>

### RAISE

Bridge House, 1 Walnut Tree Close, Guildford, Surrey GU1 4UA  
Tel: 01483 885266 email: [mail@raise-networks.org.uk](mailto:mail@raise-networks.org.uk) <http://www.raise-networks.org.uk/>

### Directory of Social Change

24 Stephenson Way, London NW1 2DP  
Tel: 020 7391 4800 email: [enquiries@dsc.org.uk](mailto:enquiries@dsc.org.uk) <http://www.dsc.org.uk/>

### Funderfinder

65 Raglan Road, Leeds LS2 9DZ  
Telephone 0113 243 3008 Fax 0113 243 2966  
<http://www.funderfinder.org.uk/>

### Lottery

<http://www.biglotteryfund.org.uk/> <http://www.awardsforall.org.uk/>  
It is a matter for individual churches to decide whether to apply to the lottery.

### Books:

The Directory of Social Change produces a wide range of books on fundraising (address above). These are generally available at libraries.

Guide to Local Trusts in the South 2008/09  
Guide to the Major Trusts Volume 1: 2007/2008  
A Guide to the Major Trusts Volume 2: 2007/2008  
Directory of Grant Making Trusts 2007/08  
The Guide to UK Company Giving 2009/10

**Also recommended** "The UK Church Fundraising Handbook – a practical manual and directory of resources" Maggie Durran, Canterbury Press, Norwich, 2003.

### Websites

A website which is a useful starter is <http://www.simple-fundraising-ideas.com/>

Charity Commissioners site is a mine of information about individual trusts:

<http://www.charity-commission.gov.uk/index.asp>

Another useful site is: <http://www.guidestar.org.uk>

An organization which makes fundraising for events easy is <http://www.justgiving.com/>